

*The* **HIMALAYAN**  
 **DATABASE**

*The Expedition Archives of Elizabeth Hawley*

**Program Guide for  
Windows**

**Himal 2.72**

**Appendix K: CrossOver for the Mac**

**Richard Salisbury**



**The Himalayan Database**

**June 2024**

## Contents

Appendix K: CrossOver for the Mac.....	3
Installing and Running CrossOver from a Pre-Built Bottle .....	3
Installing and Running CrossOver by Creating a New Bottle .....	8
Restoring the Original Himalayan Database Color Scheme.....	16
Printing from CrossOver .....	19
Printing PDFs from CrossOver.....	20
Saving Excel Files in CrossOver.....	24
Updating the Database .....	25
Replacing Components of the Database.....	30
Showing the User Library Directory Permanently.....	31

## Appendix K: CrossOver for the Mac

**CrossOver** is a program that allows you to run many popular Windows programs on a Macintosh without installing the Windows operating system. The Himalayan Database is compatible with CrossOver and may be used with CrossOver on your Mac.

CrossOver is published by CodeWeavers and is available from their web site

[www.codeweavers.com](http://www.codeweavers.com)

You can download a free trial version of CrossOver to test with the Himalayan Database to determine if it fits your needs. The current version, CrossOver 24, requires OS X 10.15 (Catalina) or higher through macOS 14 (Sonoma). If you are running OS X 10.14 (Mojave) or earlier, you will need to contact the vendor to obtain earlier versions of CrossOver.

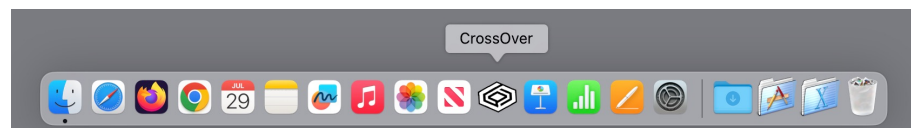
CrossOver now supports Apple silicon Mx Macs and remains compatible with the Himalayan Database.

### Installing and Running CrossOver from a Pre-Built Bottle

Download either the trial or your purchased version to your Mac from

[www.codeweavers.com](http://www.codeweavers.com)

Decompress the downloaded *crossover-24.x.zip* file and drag the resulting CrossOver program into your Applications folder on your Mac. You may then add the CrossOver program your dock if desired by dragging the CrossOver icon from your Applications folder to the dock.



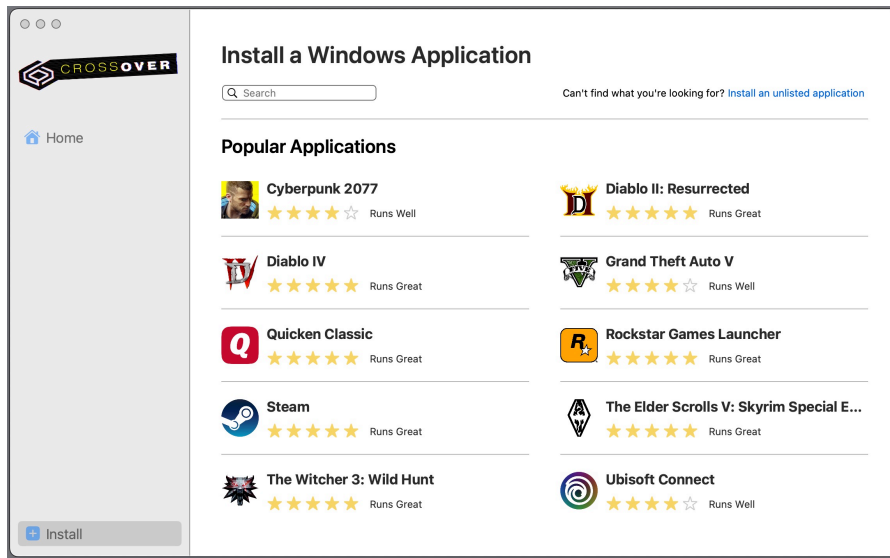
Follow the steps below to install the Himalayan Database:

- (1) Download HIMAL.carchive from the Himalayan Database web site at:

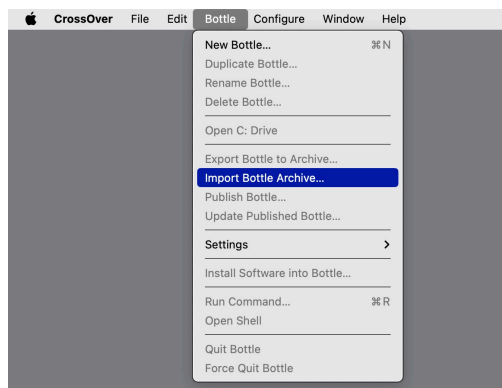
[www.himalayandatabase.com/crossover.html](http://www.himalayandatabase.com/crossover.html)

to your desktop.

- (2) Launch the CrossOver program:



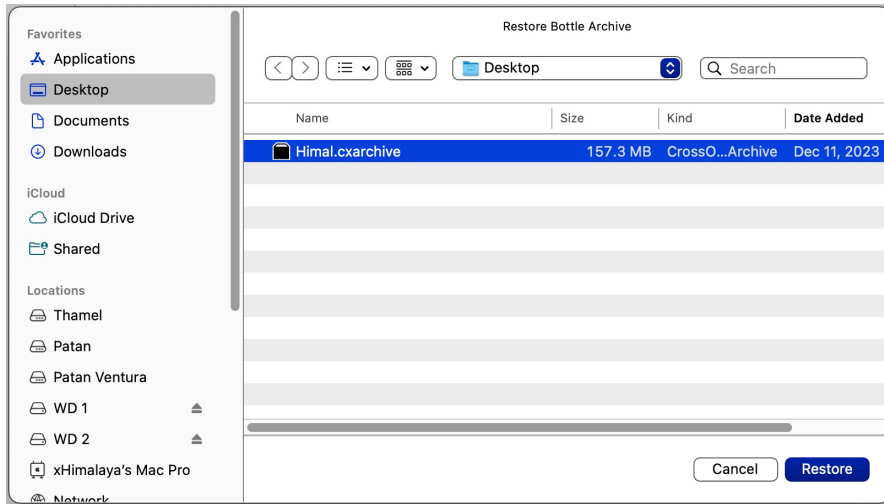
Since you will be installing a pre-built bottle containing the Himalayan Database, do not use the “Install a Windows Application” entry form, but instead choose the “Import Bottle Archive...” command from the Bottle menu (while leaving the main CrossOver window open):



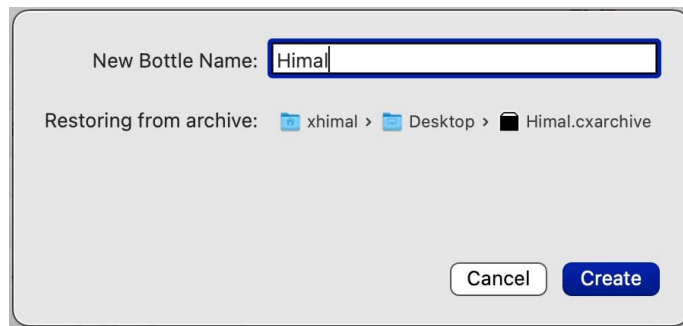
A bottle is a container that provides the Windows services to the applications that run under CrossOver. CrossOver supports several Windows operating systems such as Windows XP, Windows 7, 8, 10 or 11, all of which work equally well with the Himalayan Database. The Himalayan Database currently uses Windows 10.

- (3) When the Import Bottle window appears, navigate to the Himal.carchive file on your desktop and click on the Restore button.

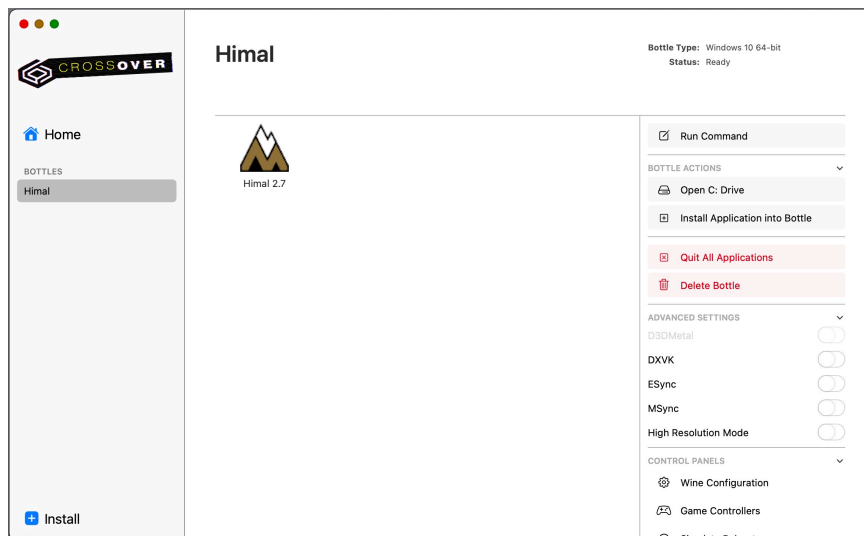




When the second Import Bottle window appears, click on the Create button:

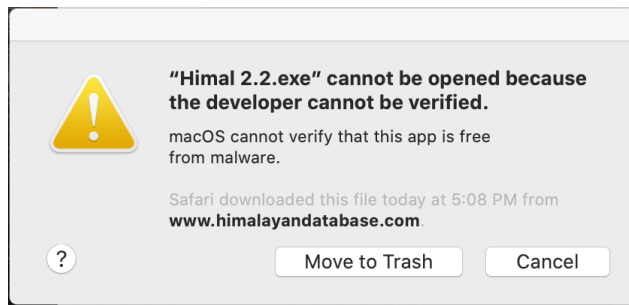


CrossOver will create the Himal bottle (this may take a few seconds). After the bottle is created, the main CrossOver window reappears:

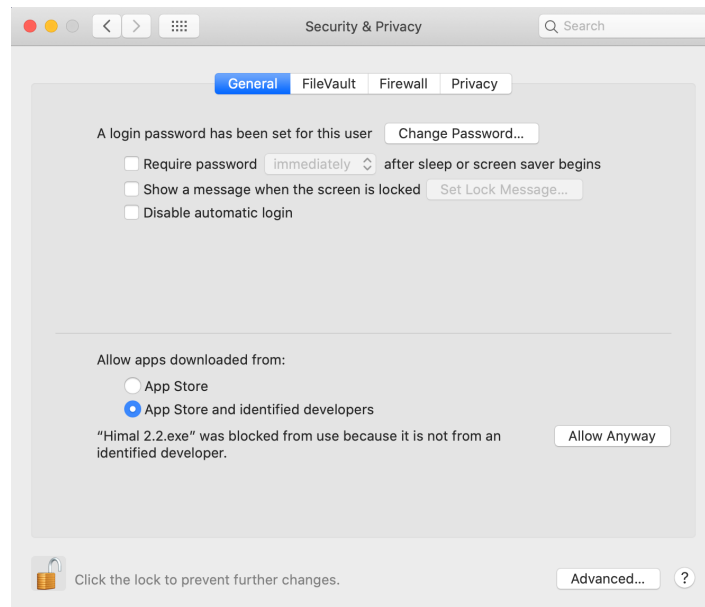


After the installation is completed, double-click the “Himal 2.7” icon in the main CrossOver window to start the Himalayan Database.

The first time you try to run the Himal program (or save the command to the Launcher), you may get the following message:



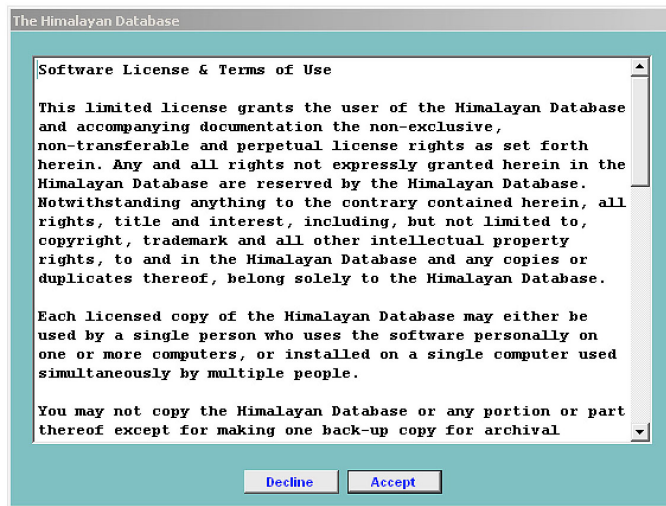
Open the Security & Privacy panel in the Apple System Settings, unlock the panel and click the Allow Anyway button for permitting Himal 2.7.exe.



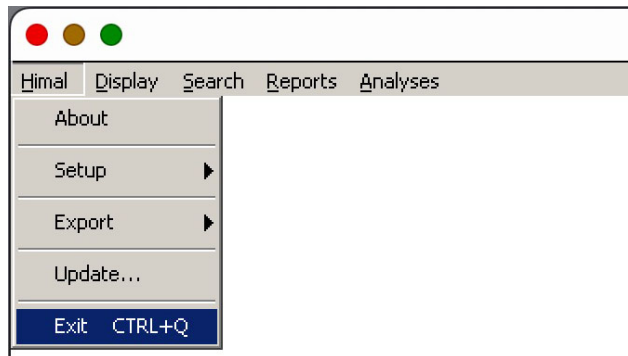
This scenario may be repeated for the VFP9R.DLL and VFP9ENU.DLL library files in future launches. Follow the same procedure outlined above.

Then click the "Run" button to launch the Himal program.

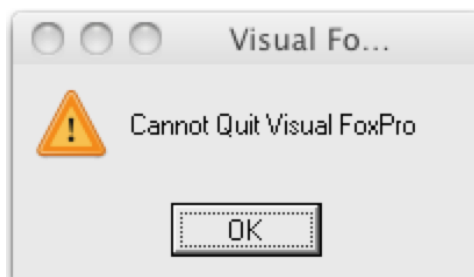
You will be asked to accept the Himalayan Database software license the first time you run the program.



When you want quit the Himalayan Database and exit CrossOver, first select the Exit command from the Himal menu in the Himalayan Database:



If you exit CrossOver directly without first exiting the Himalayan Database, you will get the following error message.



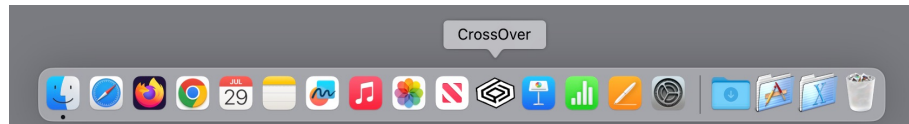
Click "OK" and then follow the correct sequence described above.

## Installing and Running CrossOver by Creating a New Bottle

Download either the trial or your purchased version to your Mac from

[www.codeweavers.com](http://www.codeweavers.com)

Decompress the downloaded *crossover-24.x.zip* file and drag the resulting CrossOver program into your Applications folder on your Mac. You may then add the CrossOver program your dock if desired by dragging the CrossOver icon from your Applications folder to the dock.

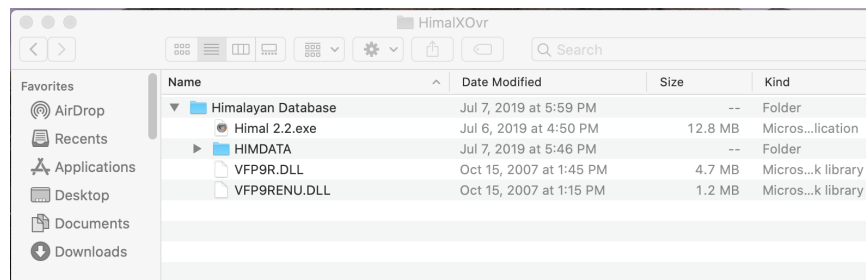


Follow the steps below to install the Himalayan Database:

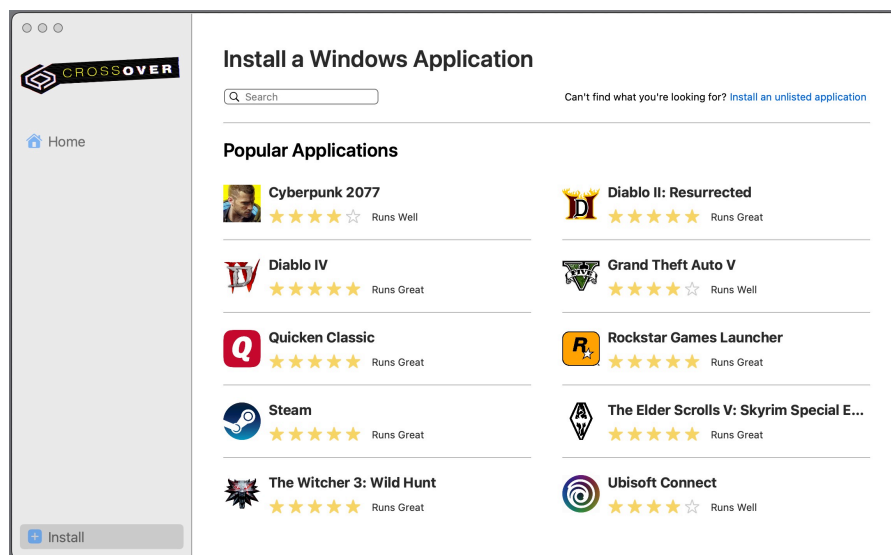
(1) Download HimalXOvr.zip from the Himalayan Database web site at:

<http://www.himalayandatabase.com/crossover.html>

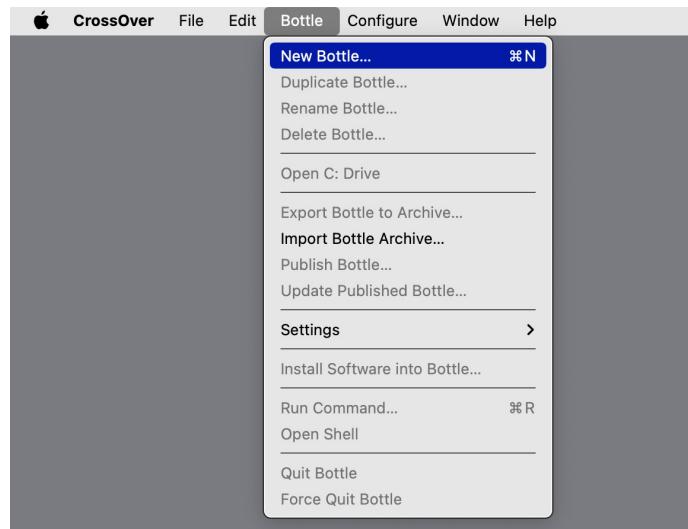
and decompress it to your desktop (resulting in the HimalXOvr folder appearing on your desktop).



(2) Launch the CrossOver program:

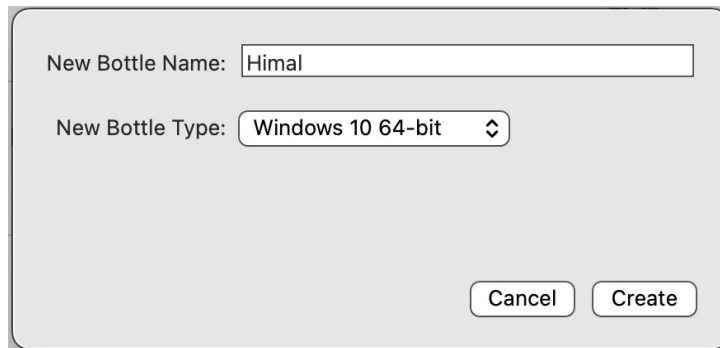


Since you will be manually installing the Himalayan Database, do not click the “Install a Windows Application” button, but instead choose the “New Bottle...” command from the Bottle menu (while leaving the main CrossOver window open):



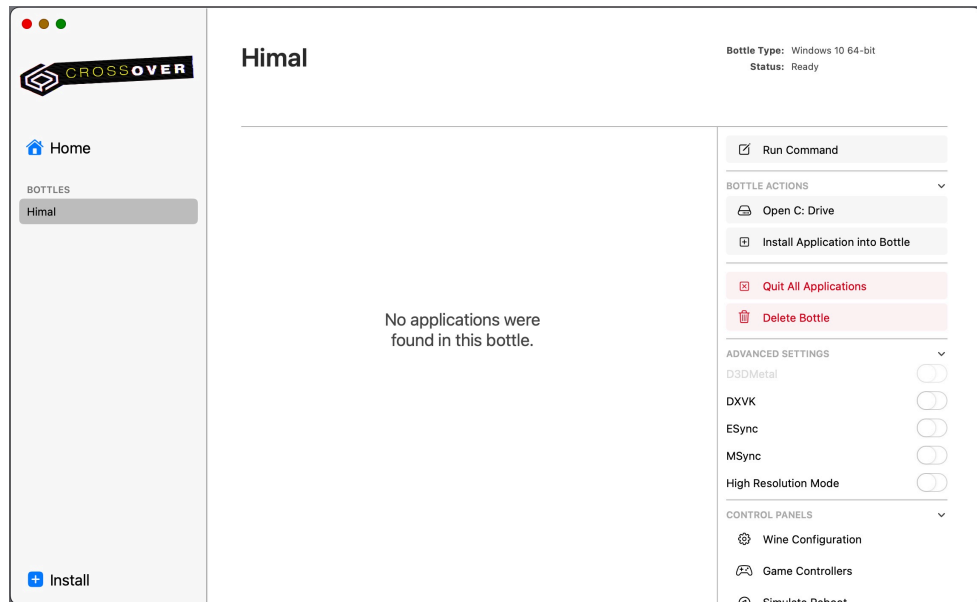
A bottle is a container that provides the Windows services to the applications that run under CrossOver. They support several Windows operating systems such as Windows XP, Windows 7, 8, 10 or 11. Windows XP or later is sufficient for the Himalayan Database.

(3) When the New Bottle window appears

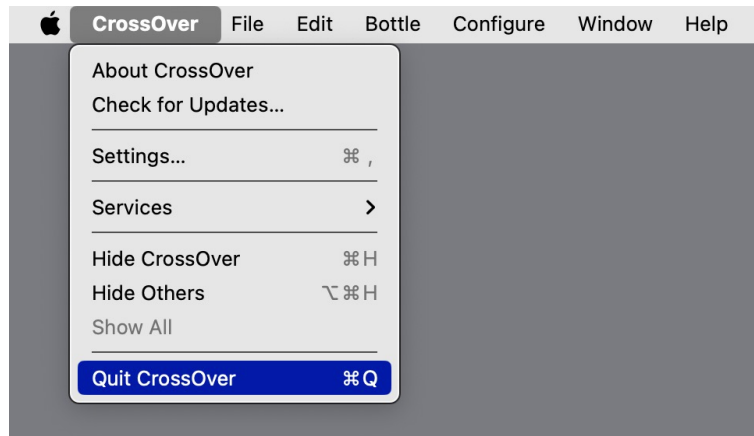


enter “Himal” as the new bottle name, select Windows 10 64-bit as the bottle type (the default) and click the Create button.

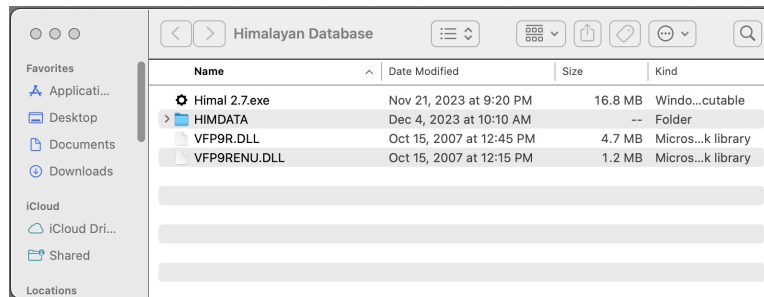
(4) CrossOver will create the Himal bottle (this may take a few seconds). After the new Himal bottle is created, the main CrossOver window reappears with the Himal bottle listed in the left column:



(5) Quit the CrossOver program.

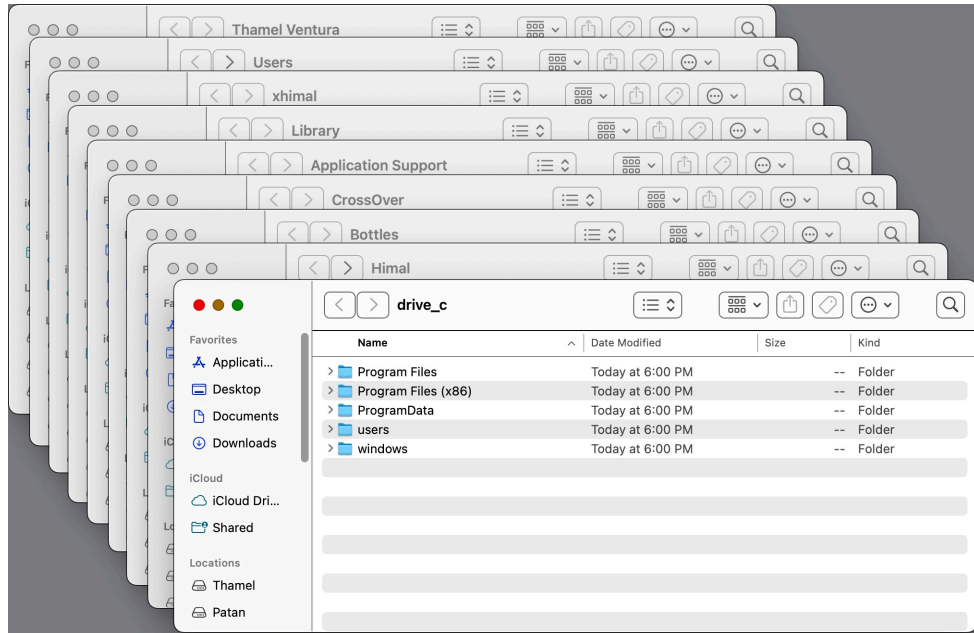


Then copy the entire Himalayan Database folder that is located

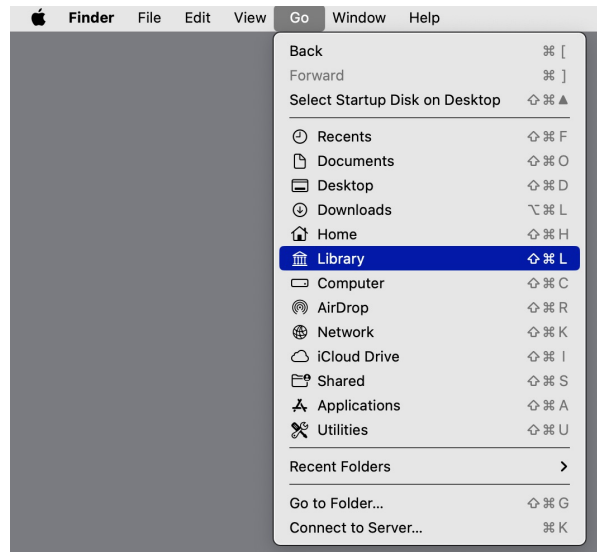


in the downloaded HimalXOvr folder on your desktop (see Step (1)) to the following location on your Mac:

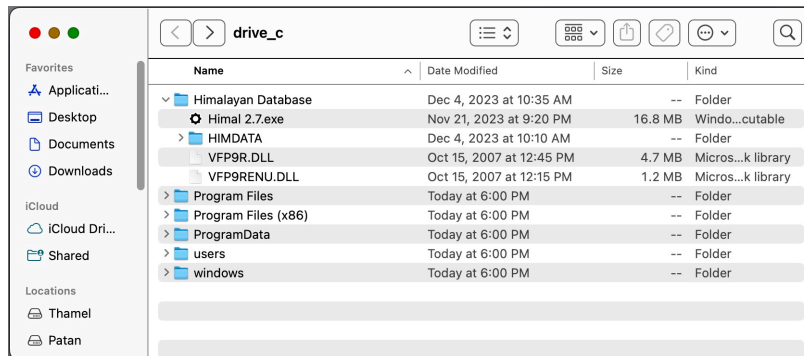
*your-hard-drive-name*>Users->*your-username*->Library->Application Support->Crossover-> Bottles->Himal>drive\_c



On some versions of OS X, the Library folder may not be visible. If the Library folder is not visible, it can be temporarily accessed from the Apple Go menu item by holding down the Option key:



After the Himalayan Database folder is installed by copying it to the drive\_c folder, the final drive\_c folder will appear as below:

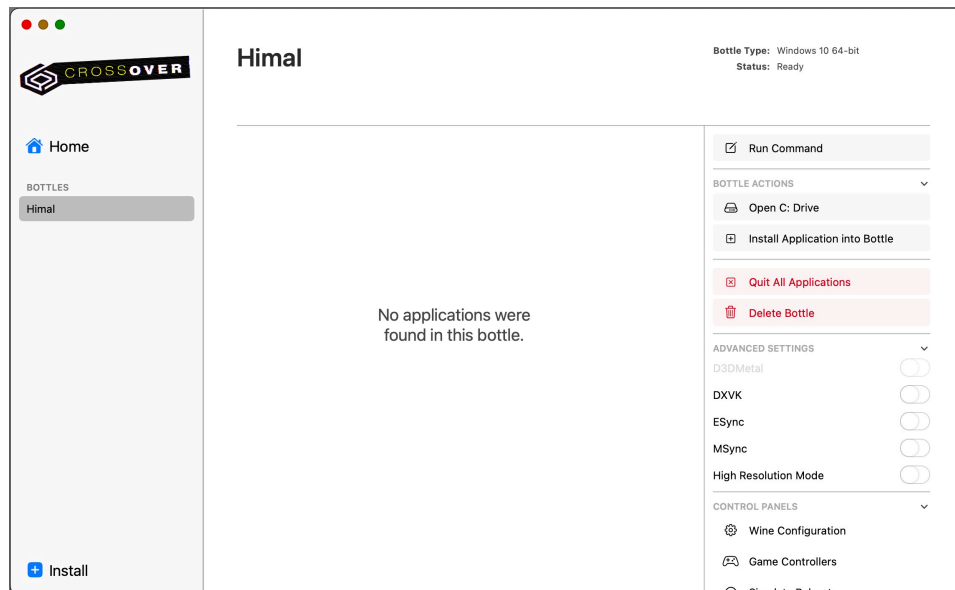


Save the Himalayan Database folder location for future use if you wish to directly install newer versions of the Himal program or updated versions of the HIMDATA folder (creating a desktop alias is an ideal way to do this).

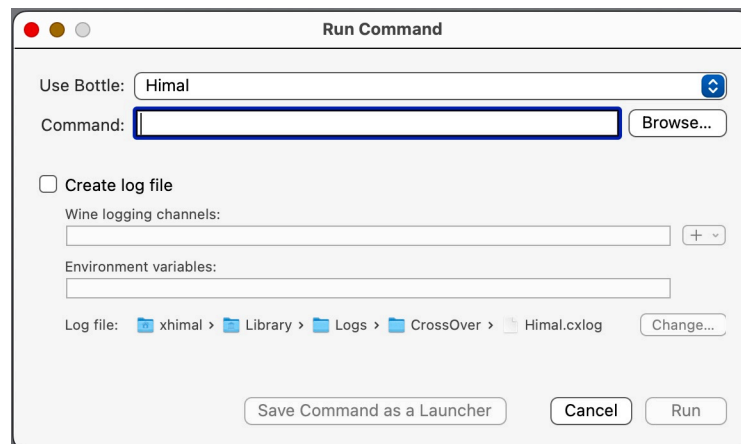
You may also create a separate desktop alias for the installed Himal 2.7.exe for future use in running the Himalayan Database.

The HIMDATA folder that you installed contains data through the latest seasons, so only future updates need to be applied.

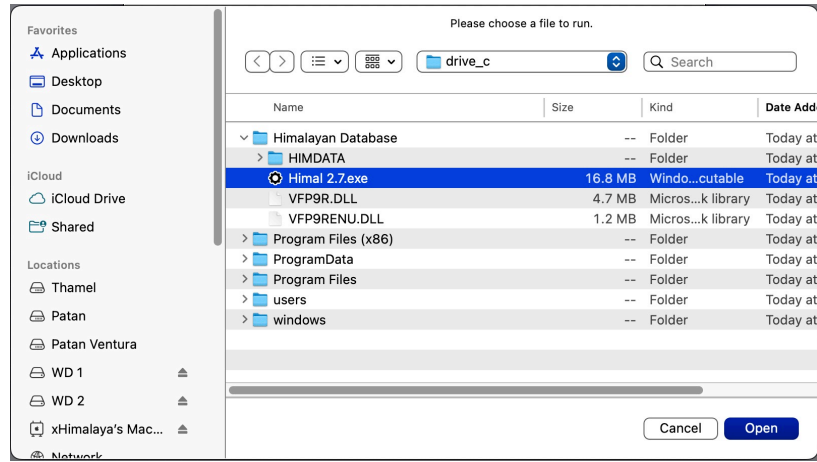
- (6) After installation is completed, restart CrossOver, select the Himal bottle and click the “Run command” in the right column of the main CrossOver window:



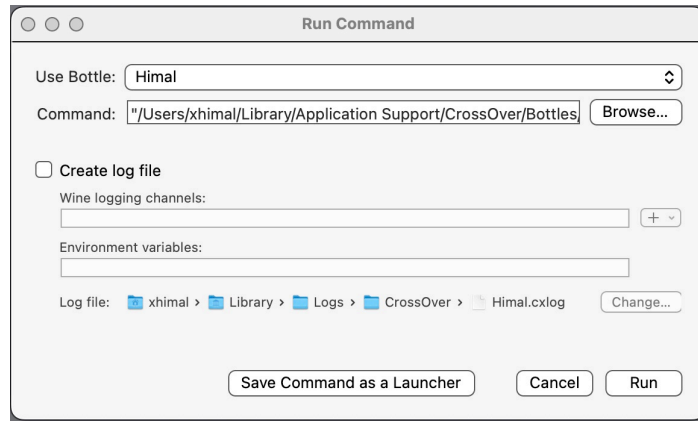
In the Run Command window, browse for the Himal 2.7 program in the Himalayan Database folder:



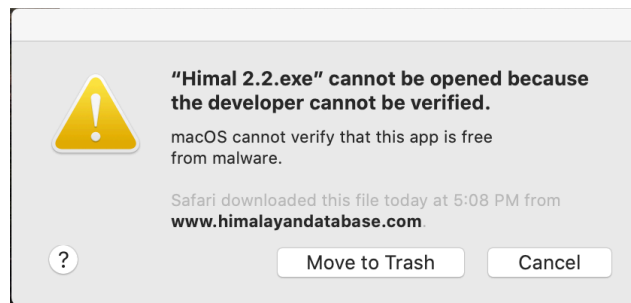




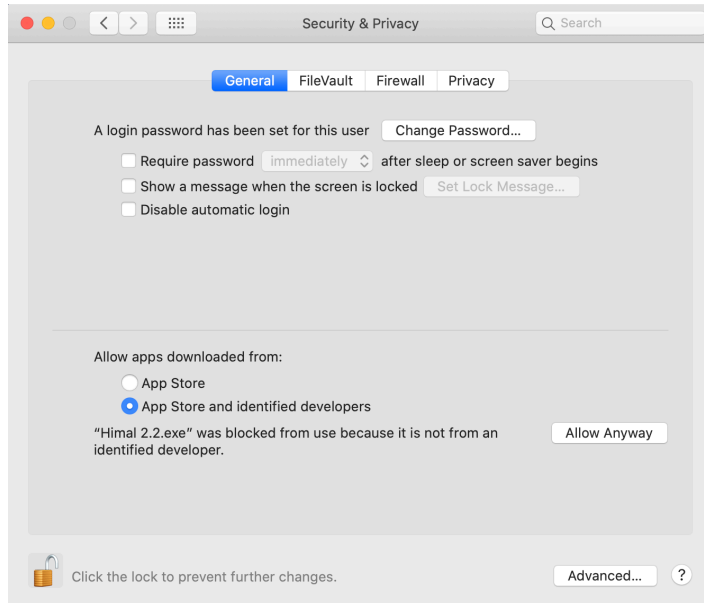
Select the *Himal 2.7.exe* file and click the “Open” button. Click “Save Command as Launcher” to insert the Himal program into the main CrossOver screen for convenient future use.



The first time you try to run the Himal program (or save the command to the Launcher), you may get the following message:



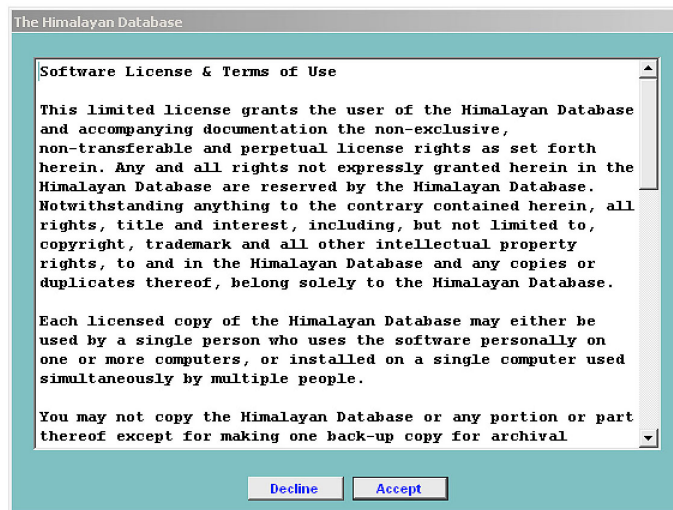
Open the Security & Privacy panel in the Apple System Settings, unlock the panel and click the Allow Anyway button for permitting Himal 2.7.exe.



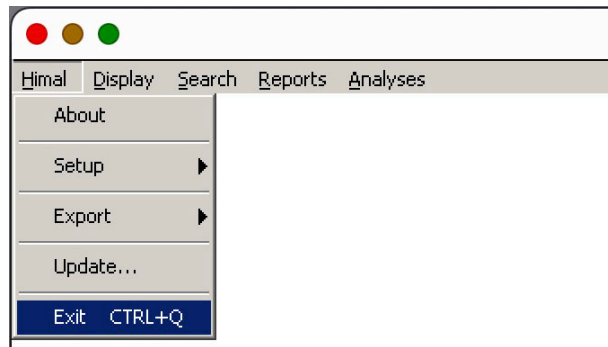
This scenario may be repeated for the VFP9R.DLL and VFP9ENU.DLL library files in future launches. Follow the same procedure outlined above.

Then click the “Run” button to launch the Himal program.

You will be asked to accept the software license the first time you run the program.



When you want quit the Himalayan Database and exit CrossOver, first select the Exit command from the Himal menu in the Himalayan Database:

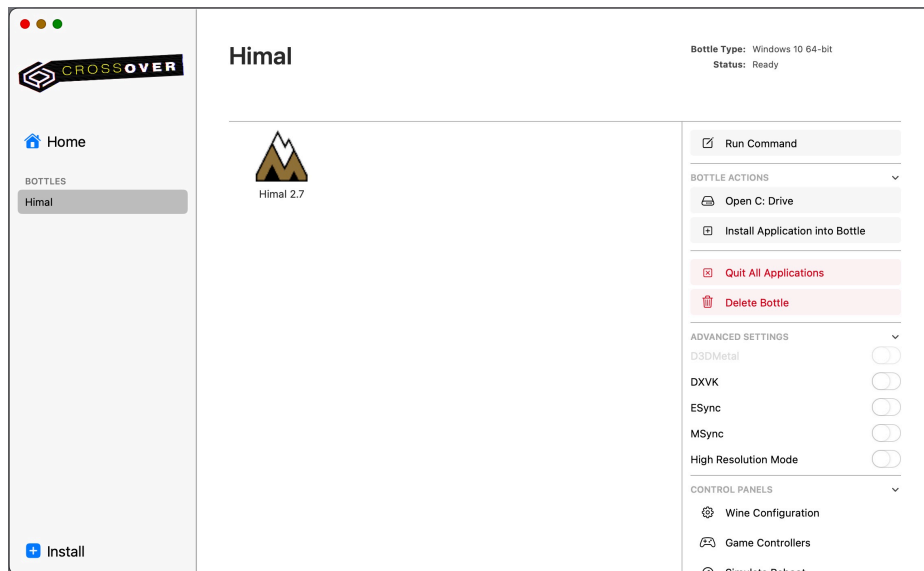


If you exit CrossOver directly without first exiting the Himalayan Database, you will get the following error message.



Click “OK” and then follow the correct sequence described above.

For future sessions of using the database, you may either select the “Himal 2.7” item from the main CrossOver screen, or double-click your desktop alias, if you created one in Step (5).



## Restoring the Original Himalayan Database Color Scheme

Some versions of CrossOver may use a different scheme for rendering the colors of the Himalayan Database, e.g.:

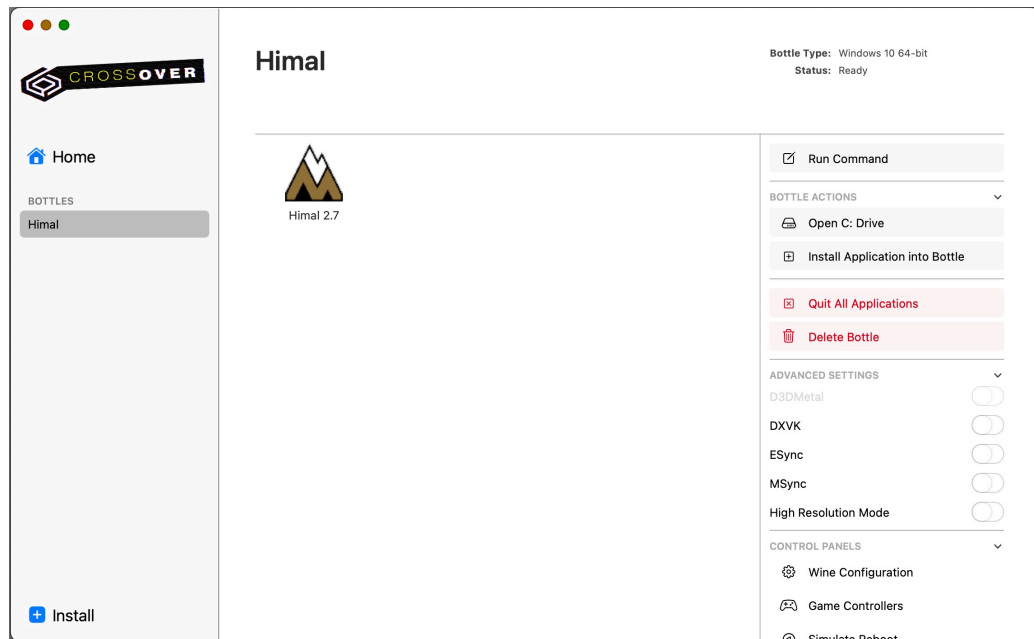
The screenshot shows a web application window titled "Expedition" with a blue header and a green border. The main content area has a light green background. The form contains the following elements:

- Header: EVER-231-01 Everest (8849m) Nepal Spring 2023
- Navigation tabs: Name & Nationality, Expedition Details, Route Notes, Accidents & Achievements, Members, Literature
- Form fields: Nationality (Nepal), Year/Season (2023), Spring (dropdown), Host Cntry (Nepal), Other Cntrys (text area), Sponsor/Name (Sherpa Rope-Fixing Everest South 2023), Leadership (Sherpa Rope-Fixing)
- Table with columns: Success, Route, Team Ascent #
  - R1:  S Col-SE Ridge
  - R2:
  - R3:
  - R4:
- Checkboxes: Success Disputed or Unverified, Claim Unrecognized, Primarily on 8000m standard route, Primarily on commercial route
- Other Summits (text area)
- Info with Primary Expedition:  Route,  Members,  Literature, Primary Exp (dropdown), Display Primary Expedition button
- Footer buttons: Display Peak, Exit, Print

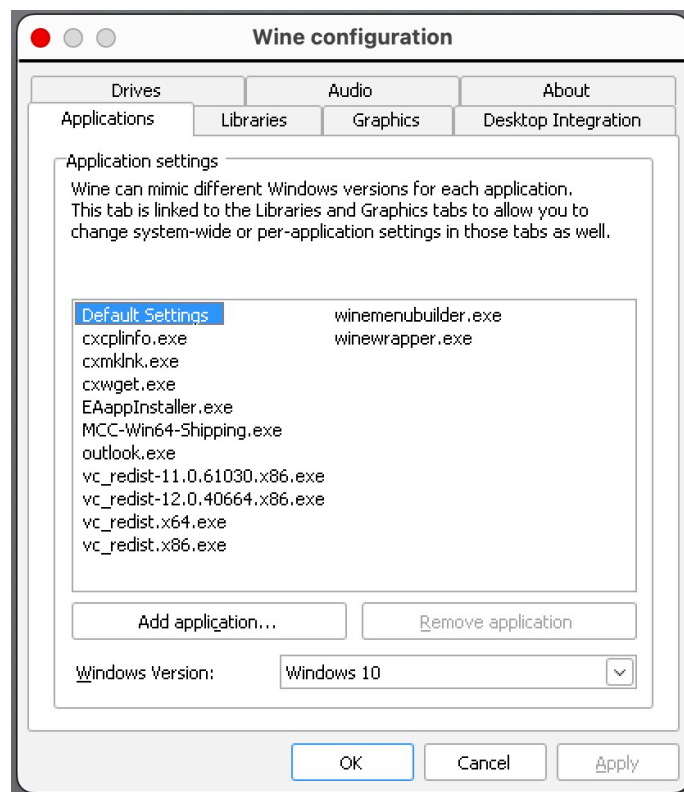
appears instead of the original Windows rendition

This screenshot shows the same Expedition form as above, but with a classic Windows color scheme. The header is blue, the border is grey, and the main content area has a light grey background. The form elements and data are identical to the previous screenshot.

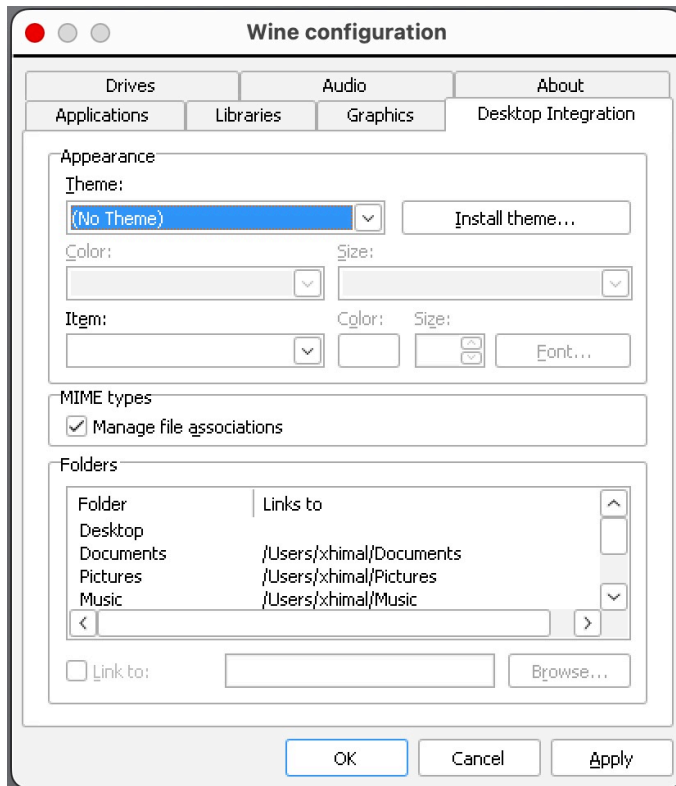
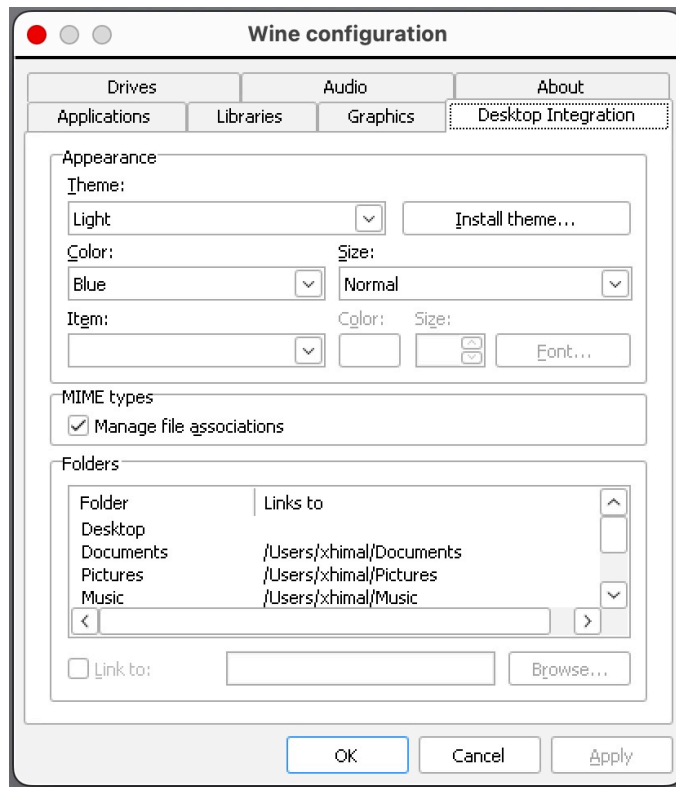
If you have the non-standard rendition and wish to restore the original rendition, select the bottle name in the left column and then click on the Wine Configuration command in the Control Panels section in the lower right corner of the main CrossOver window



to bring up the CrossOver Wine Configuration panel

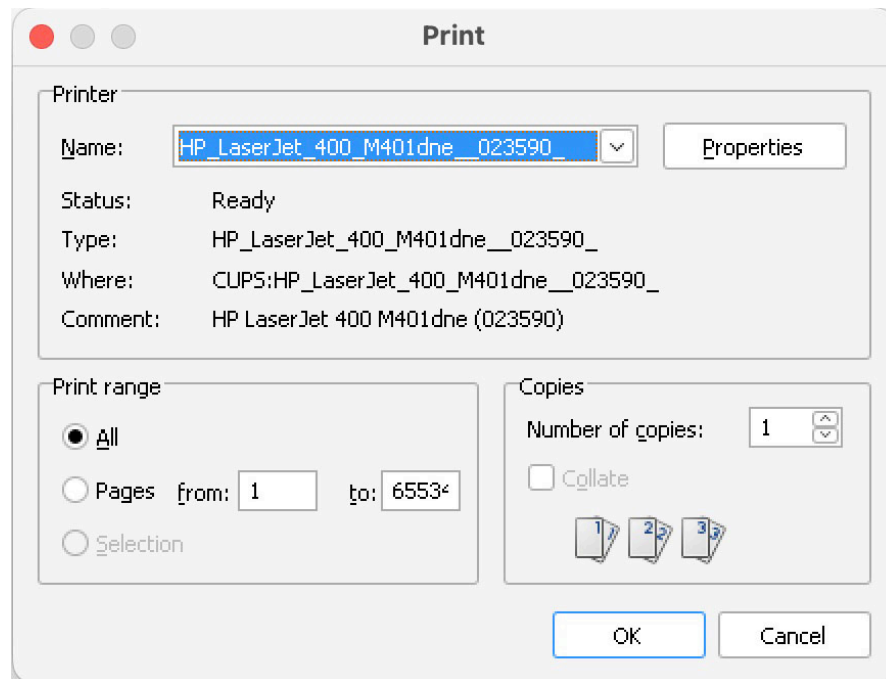


Select the Desktop Integration tab, then select “No Theme” from the Theme option in the Appearance section, and finally click on the Apply button at the bottom on the panel:

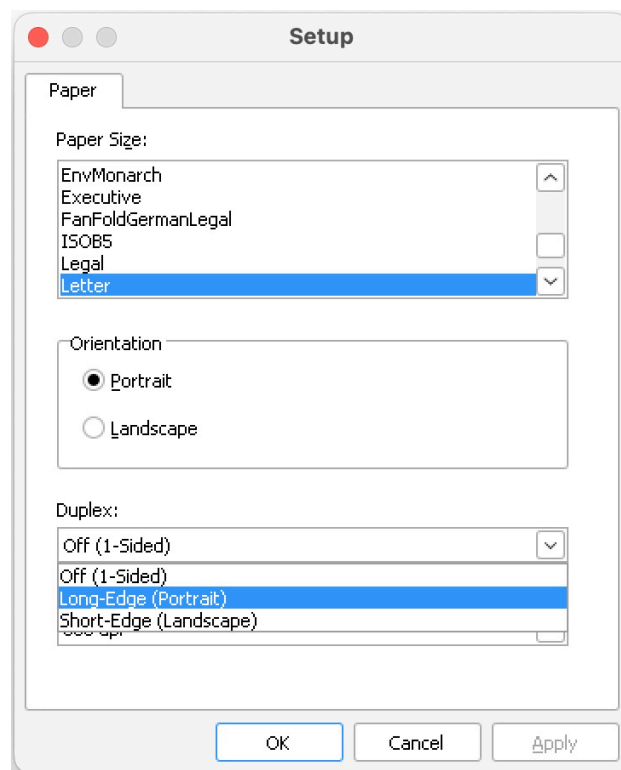


## Printing from CrossOver

CrossOver provides its own dialog box for printing from Windows programs.



By default, the printed output will be one-sided. If you want double-sided output, click on the “Properties” button and then select either “Long Edge” or “Short Edge” depending on whether you are printing in Portrait or Landscape mode.

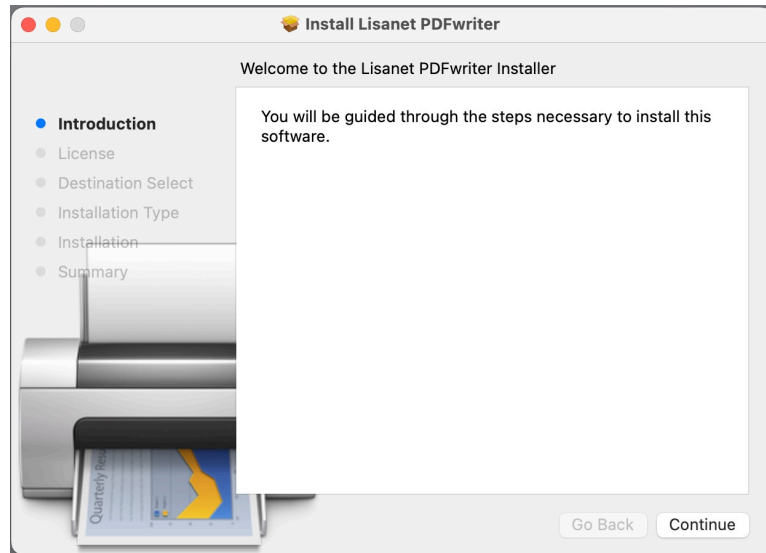


## Printing PDFs from CrossOver

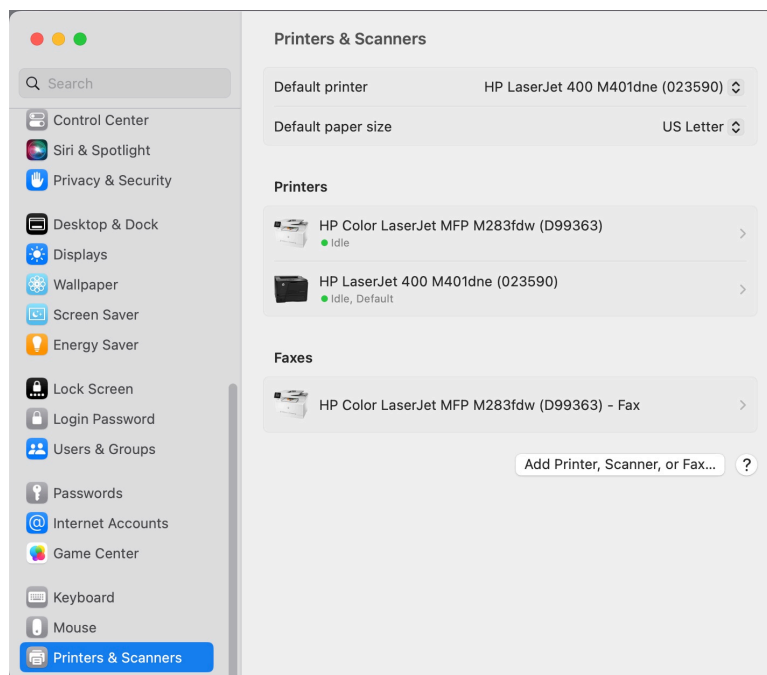
Printing PDF files from CrossOver requires the installation of the PDFwriter\_for\_Mac software in your Macintosh system. Download the PDFwriter installer package from the Himalayan Database web site at:

[www.himalayandatabase.com/crossover.html](http://www.himalayandatabase.com/crossover.html)

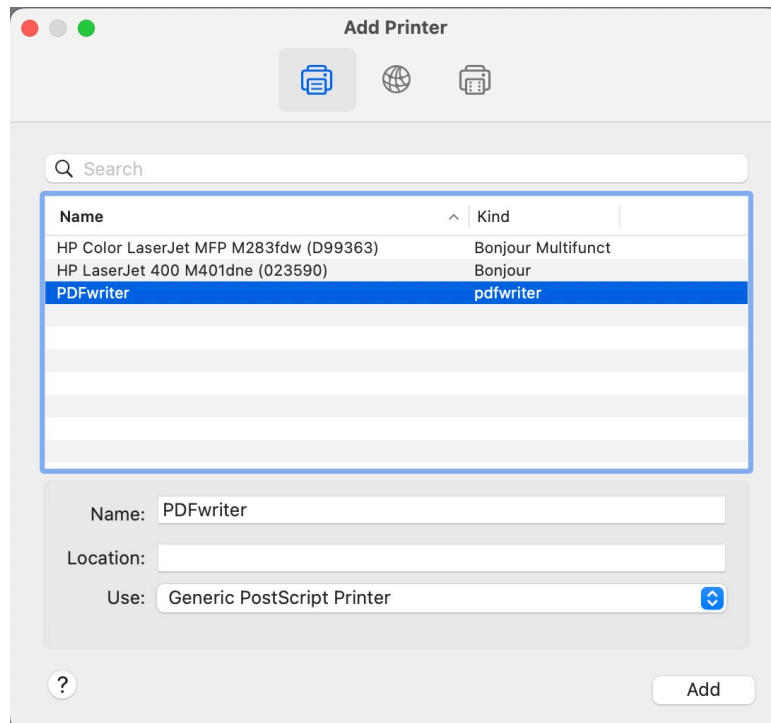
Decompress it, double-click on the PDFwriter\_for\_Mac\_1.2.1.dmg icon to mount it and then run the Lisanet PDFwriter installer.



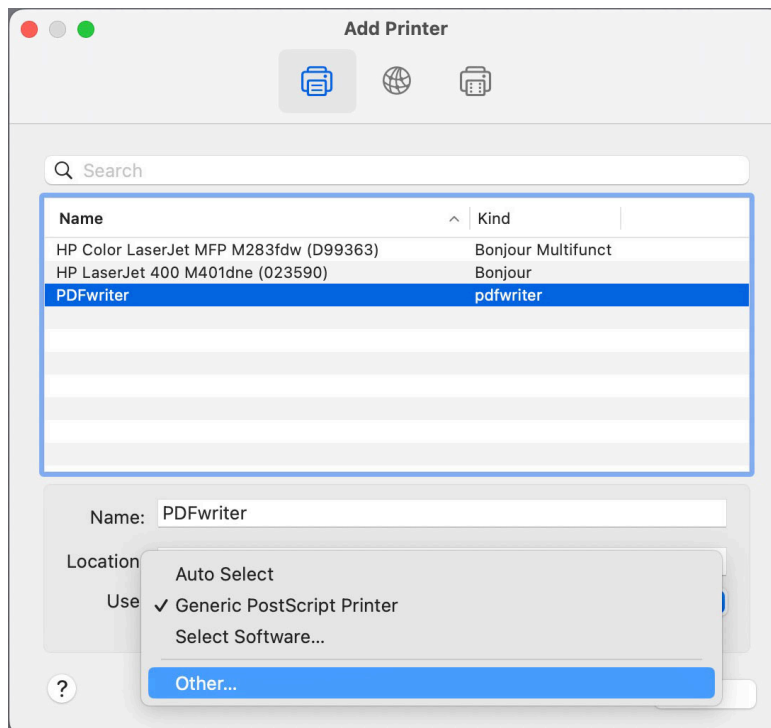
After the installation is completed, you must add the PDFwriter printer to your printer list. Select "System Settings" from the Apple menu and then select "Printers & Scanners." Click the "Add Printer, ..." button below the printer list and the select "PDFwriter" from the Add window.



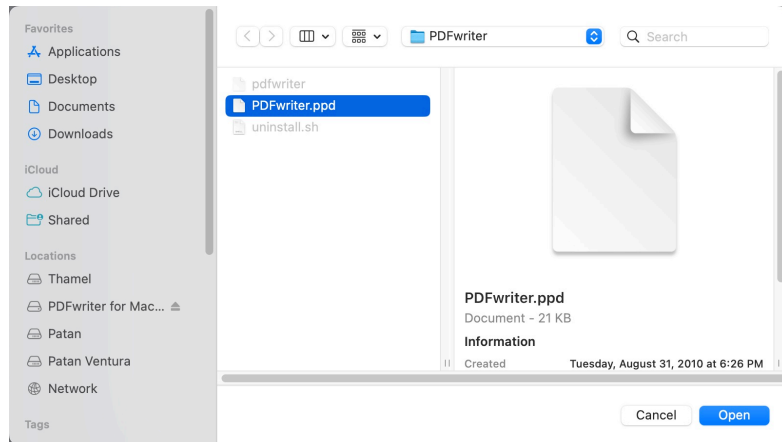




If the Use option only has “Generic Postscript Printer” available instead of “Lisanet PDFwriter” (which often occurs with the newer versions of the macOS, then you may need to manually locate the Lisanet printer driver.

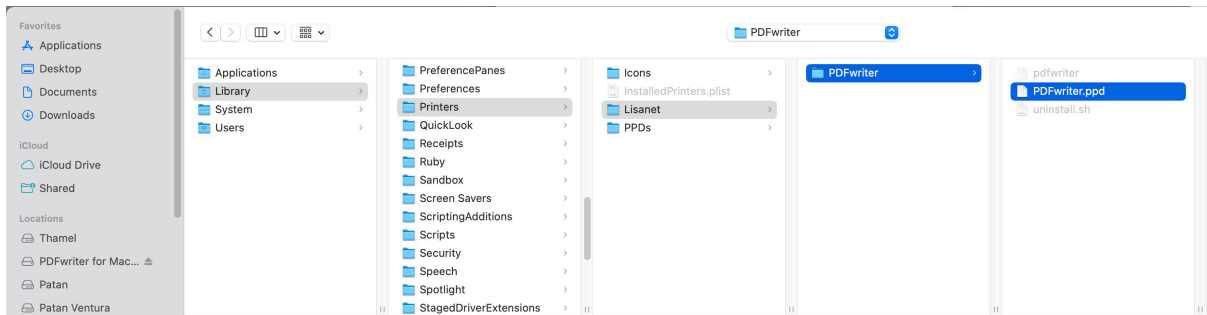


Click on the Use drop-down list and select the “Other” option. If the following screen immediately appears, you have found the Lisanet printer driver:

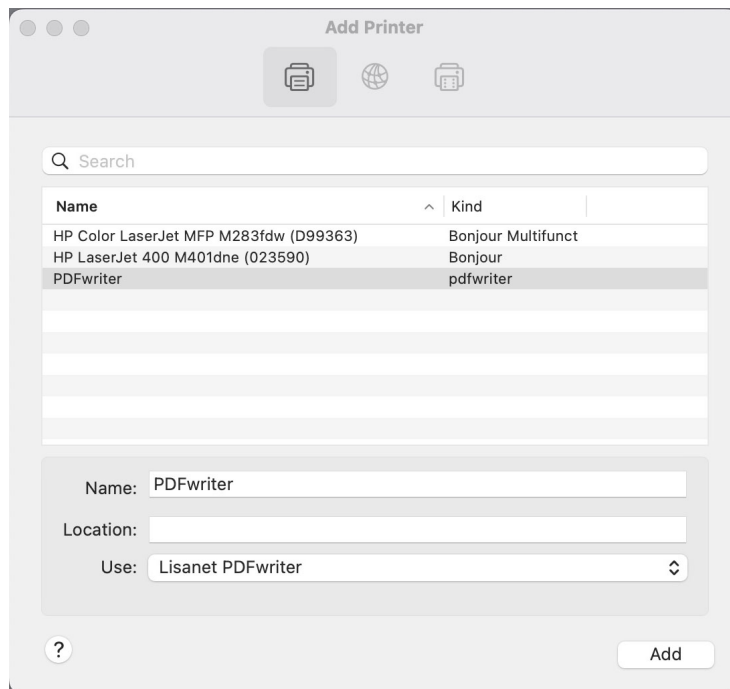


Otherwise navigate to the Lisanet printer driver by following the path

Macintosh HD -> Library -> Printers -> Lisanet ->PDFwriter

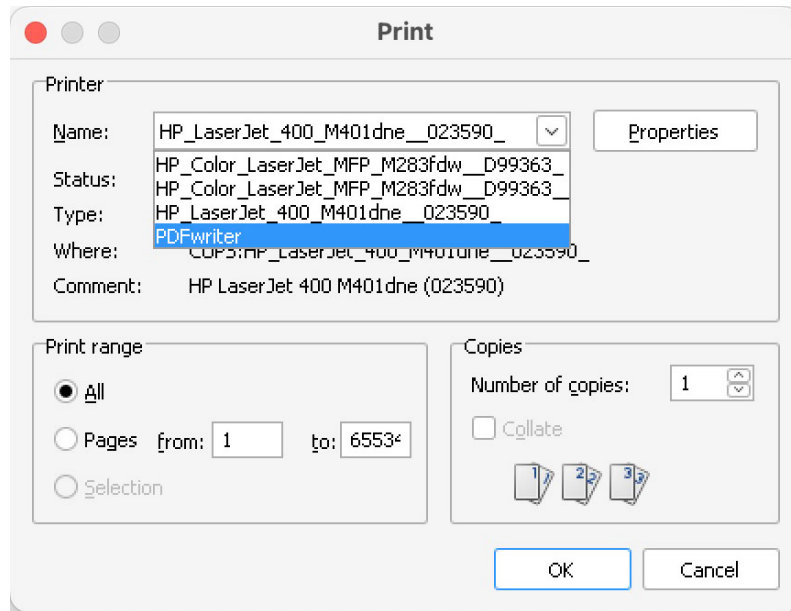


and click the “Open” button for the PDFwriter.ppd in the PDFwriter folder. The Add screen should now show Lisanet PDFwriter as the Use option.

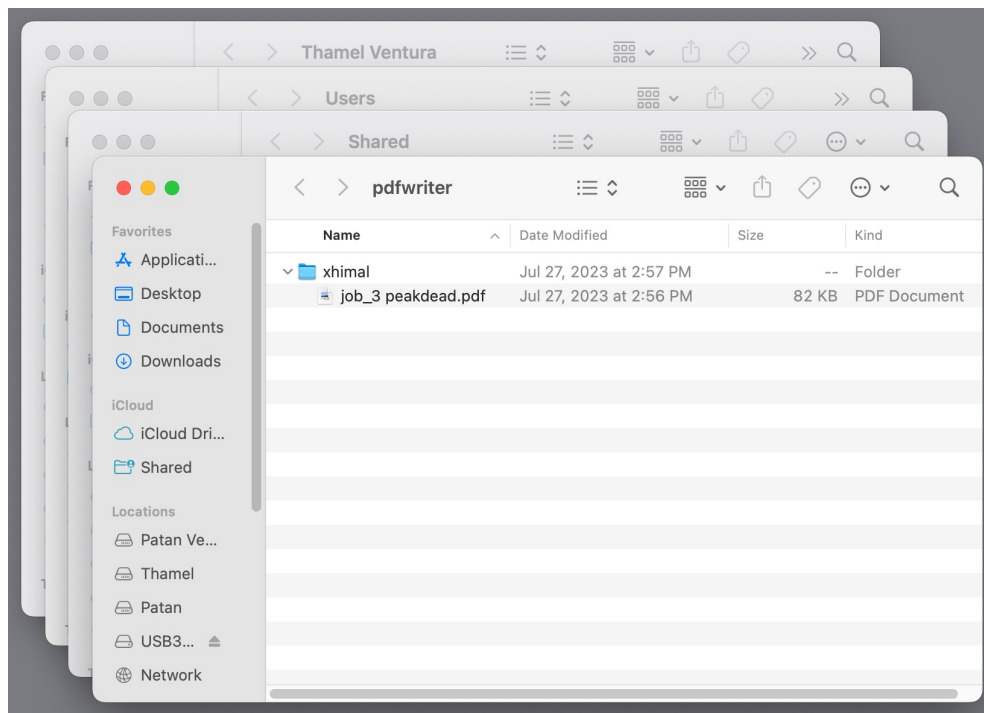


Click on “Add” to add PDFwriter to your list of available printers.

When printing a PDF file from the Himalayan Database, select “PDFwriter” from the Print dialog.



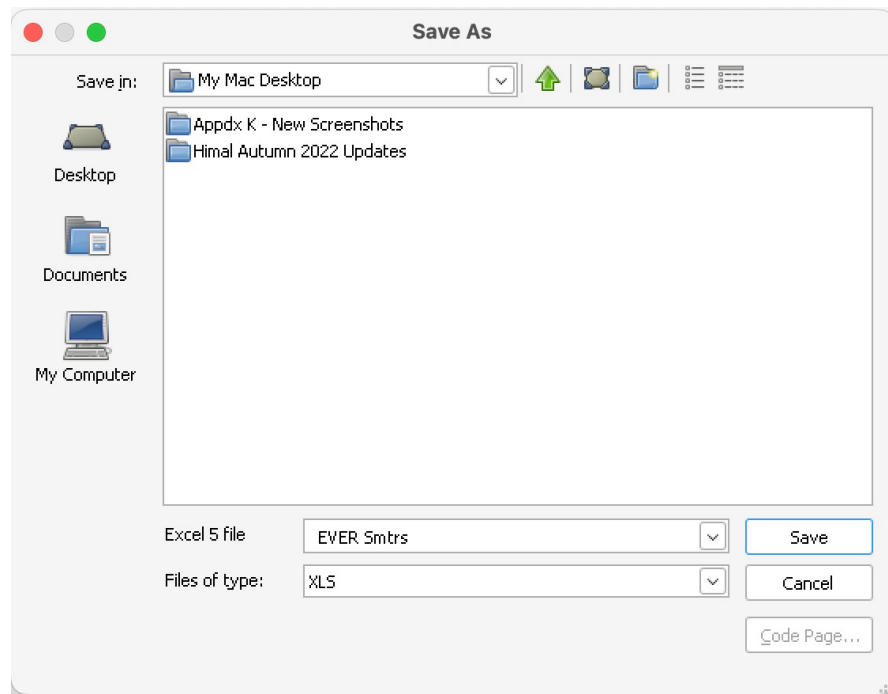
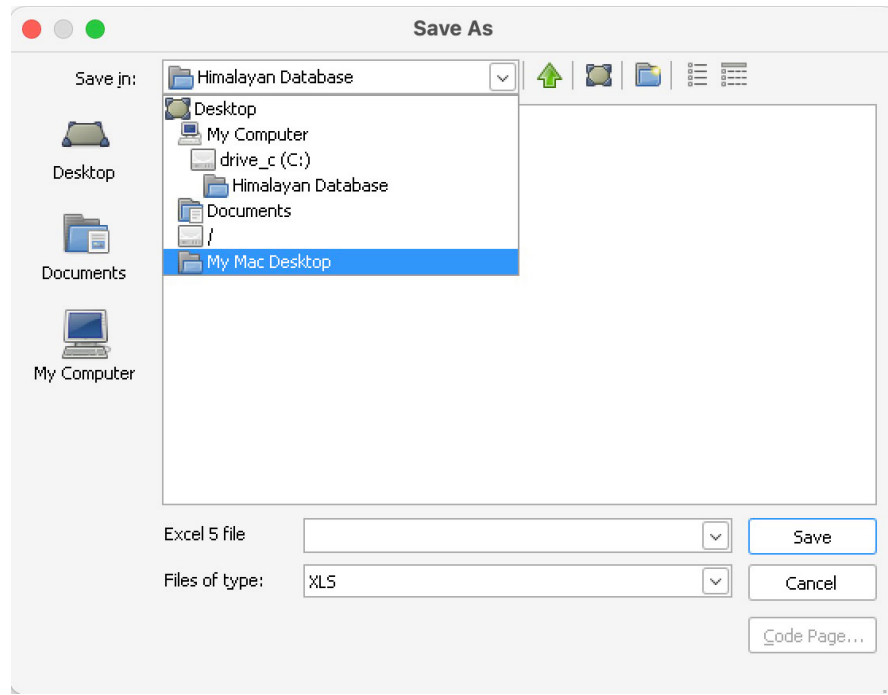
The PDF-output is written to the PDFwriter folder in the Users Shared folder and is given a generic file name such as “job\_3 peakdead.pdf.”



You can rename your PDF-output file to better match its contents. Also you may want to create a desktop alias for the PDFwriter folder and rename that to “PDFwriter PDFs” or something else to your liking.

## Saving Excel Files in CrossOver

When saving Excel files (or any other type of file), a recommended practice is to save them to the Macintosh desktop so that they can be easily accessed. In the “Save As” dialog box, scroll down and select “My Mac Desktop” and then click the “Save” button.



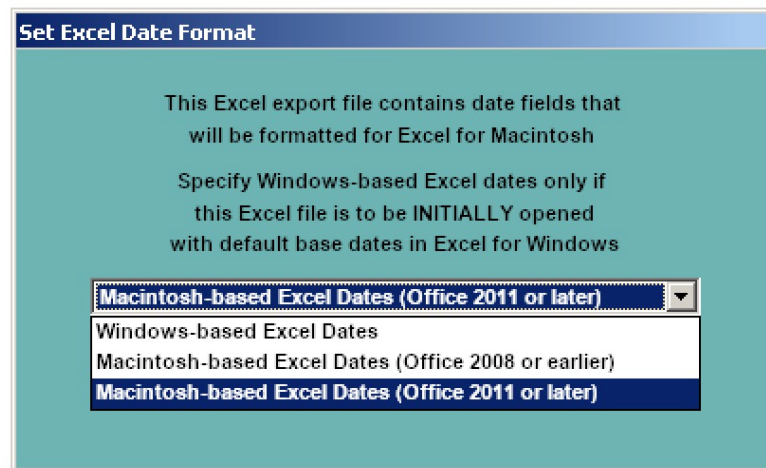
Saving a report to an Excel file poses a special problem when going cross-platform from Windows to Macintosh (or vice-versa) due to the fact that Excel for Windows and Excel for Macintosh use different Julian base dates in date fields. For Windows, the Julian base date of 1 is Dec 30, 1899 while for Macintosh the

Julian base date of 1 is January 1, 1904 (the two versions occur because they use differing strategies to account for the fact that 1900 was not a leap year).

Normally, Excel handles this properly if a Windows-export is first opened by Excel for Windows and a Mac-export is first opened by Excel for Macintosh. Once opened, the file is properly marked so that date fields in subsequent openings of the file are properly handled regardless of which version of Excel is used.

But when saving Excel files from a Windows program run under CrossOver, most likely you will be first opening the file using Excel for Macintosh. Thus the date fields may be incorrect (off by 1462 days) unless adjusted for if you are using default base dates in Microsoft Office 2008 or earlier. The Himalayan Database allows you to compensate for this by selecting “Macintosh-based Excel Dates” in the following dialog window that appears when you save the file.

Further information about Excel base dates and how to compensate for their differences may be found by doing a Google search for “Excel base dates.”



## Updating the Database

Periodic updates to the Himalayan Database will be issued via the Internet at

*[www.himalayandatabase.com](http://www.himalayandatabase.com)*

These updates will add records for new expeditions and corrections and additions to records for previous expeditions.

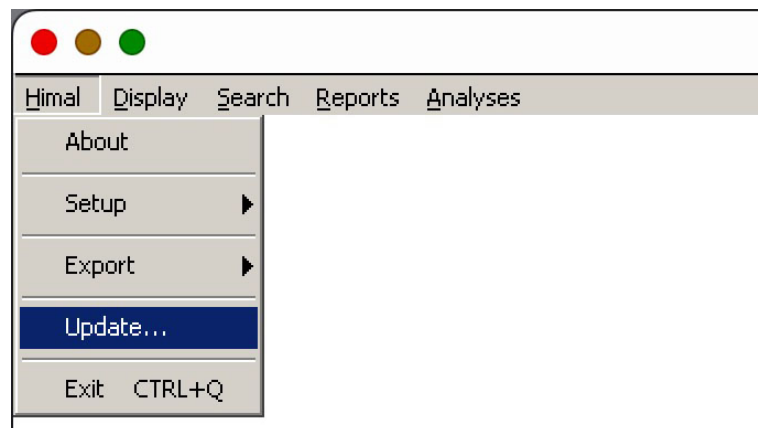
For users running the Himalayan Database with CrossOver on a Macintosh, the instructions are similar to those running on Windows.

First download the compressed update package from the website *onto the desktop of your Macintosh* and decompress it by double-clicking on the update package. The result of the decompression is a folder with a name similar to “Himal Spring 2023 Updates” containing 14 update files:

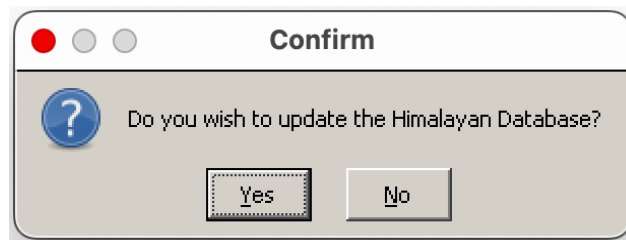
expchgs.dbf	memchgs.fpt	refer.cdx
expchgs.fpt	memchgs.cdx	peaks.dbf
expchgs.cdx	memlog.dbf	peaks.fpt
explog.dbf	refer.dbf	peaks.cdx
memchgs.dbf	refer.fpt	

The files of the form “exp...” and “mem...” contain the changes to be applied to the EXPED and MEMBERS tables. The files of the form “refer...” and “peaks...” are replacement files for the current files in the Himalayan Database.

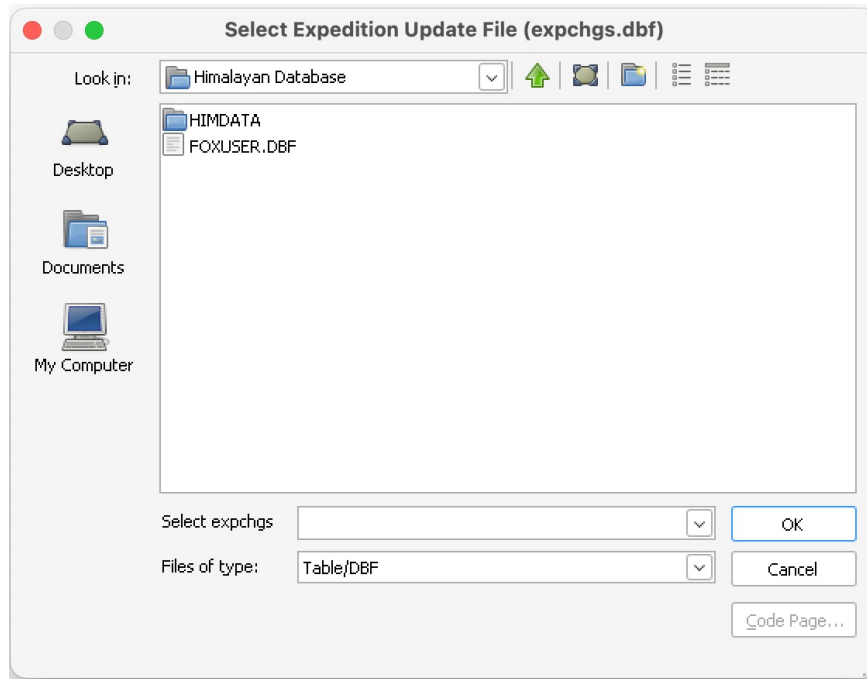
Start the HIMAL program and use the **Update** command in the **File** menu to apply the updates to the Himalayan Database.



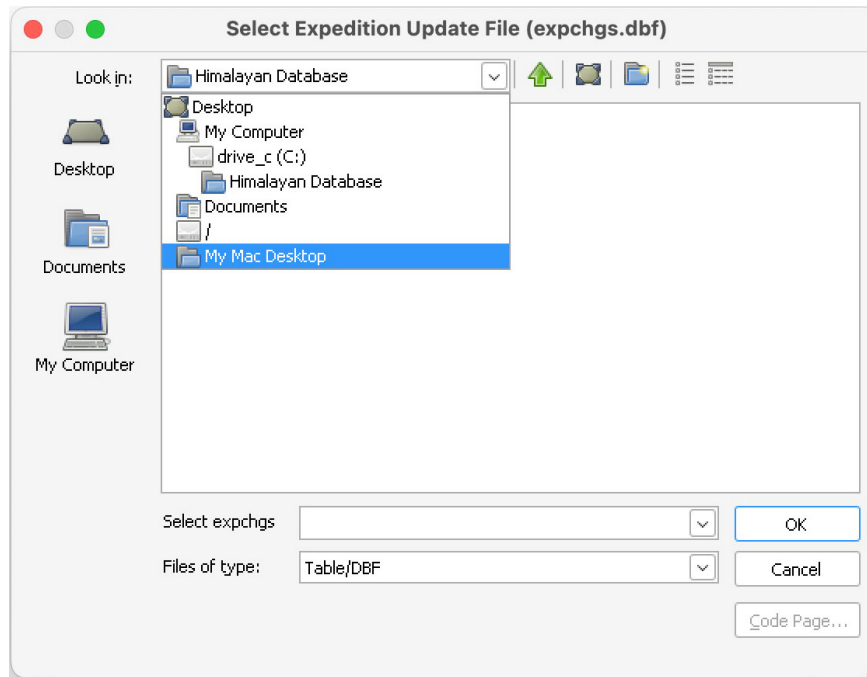
Confirm that you wish to proceed with the update:



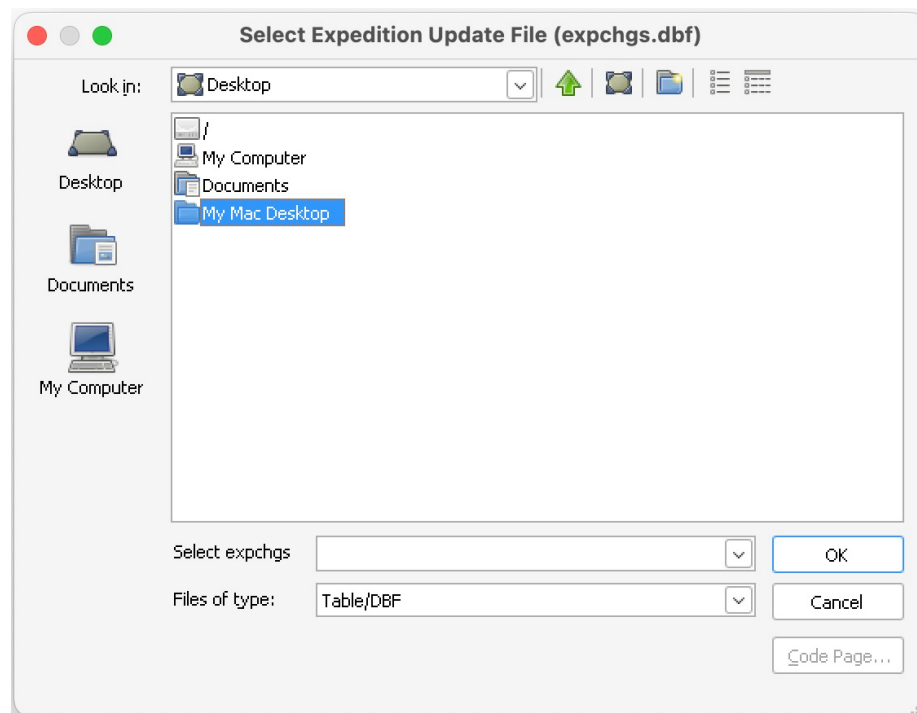
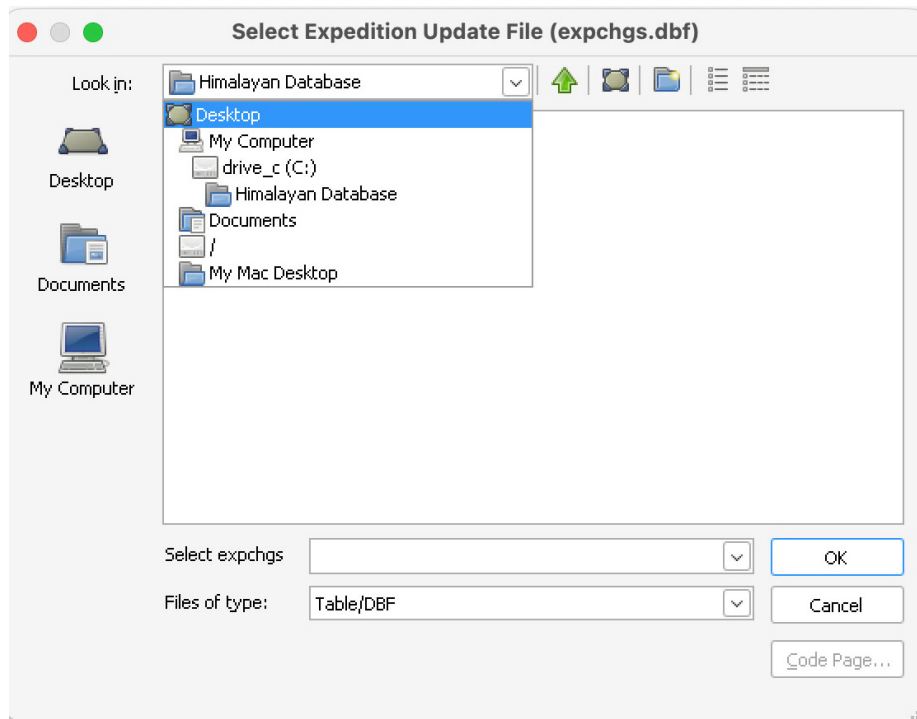
The Select Expedition Update File dialog screen will appear:



Navigate to the My Mac Desktop folder, which should appear below “himalayan database”:

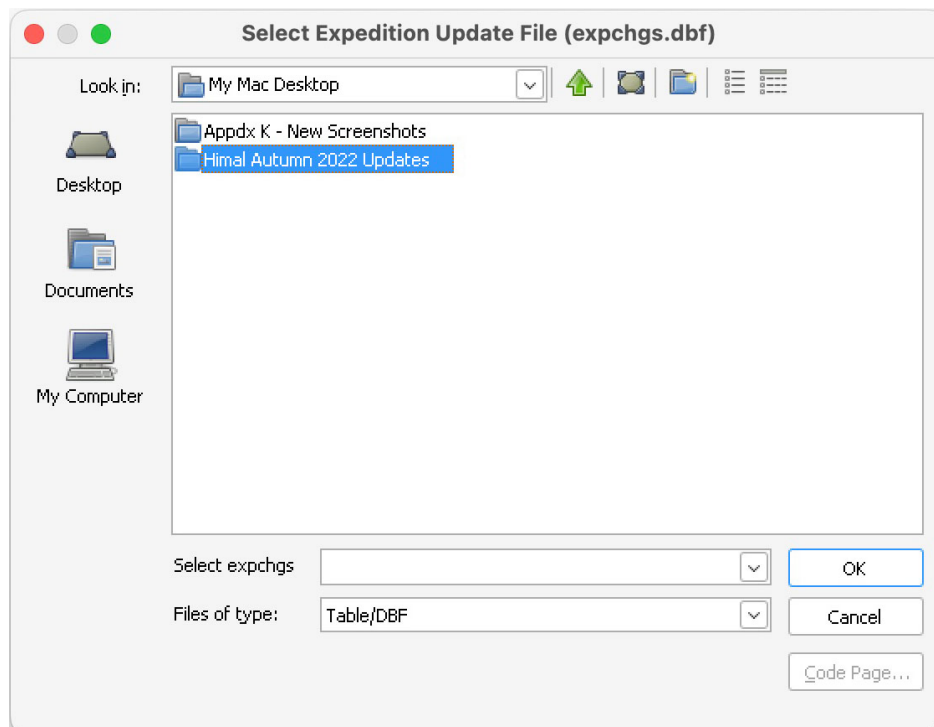


or if it not visible, navigate to and select “Desktop” above it and then select the My Mac Desktop folder:

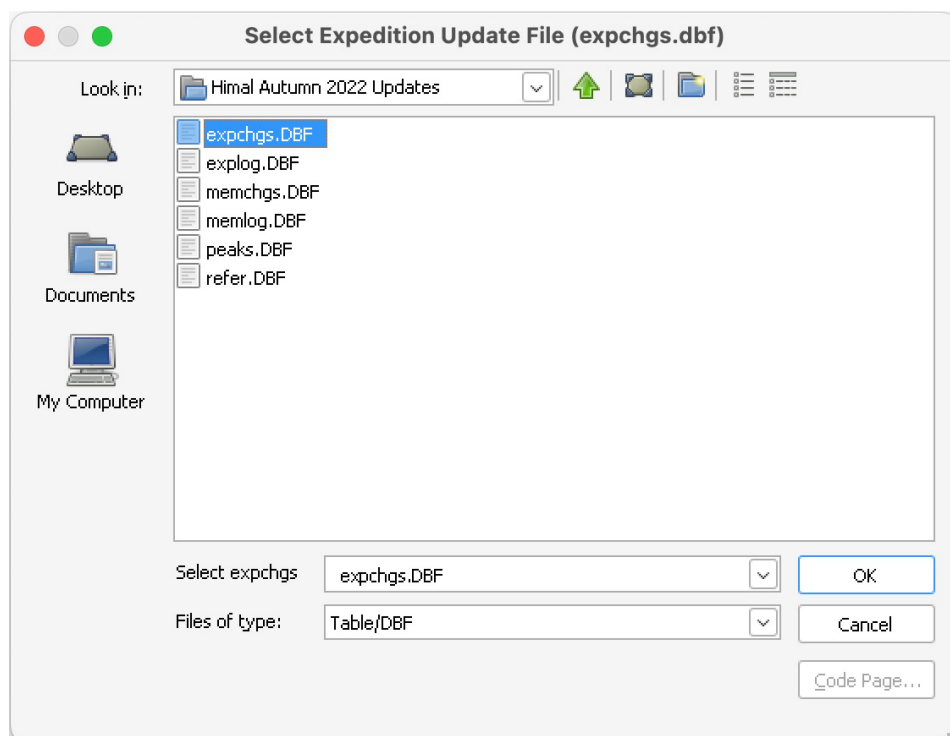


Then navigate to the current Himal Updates folder:





After you have selected and opened the Himal Update folder, select the first file named “expchgs.dbf” and click the **OK** button in the dialog box.



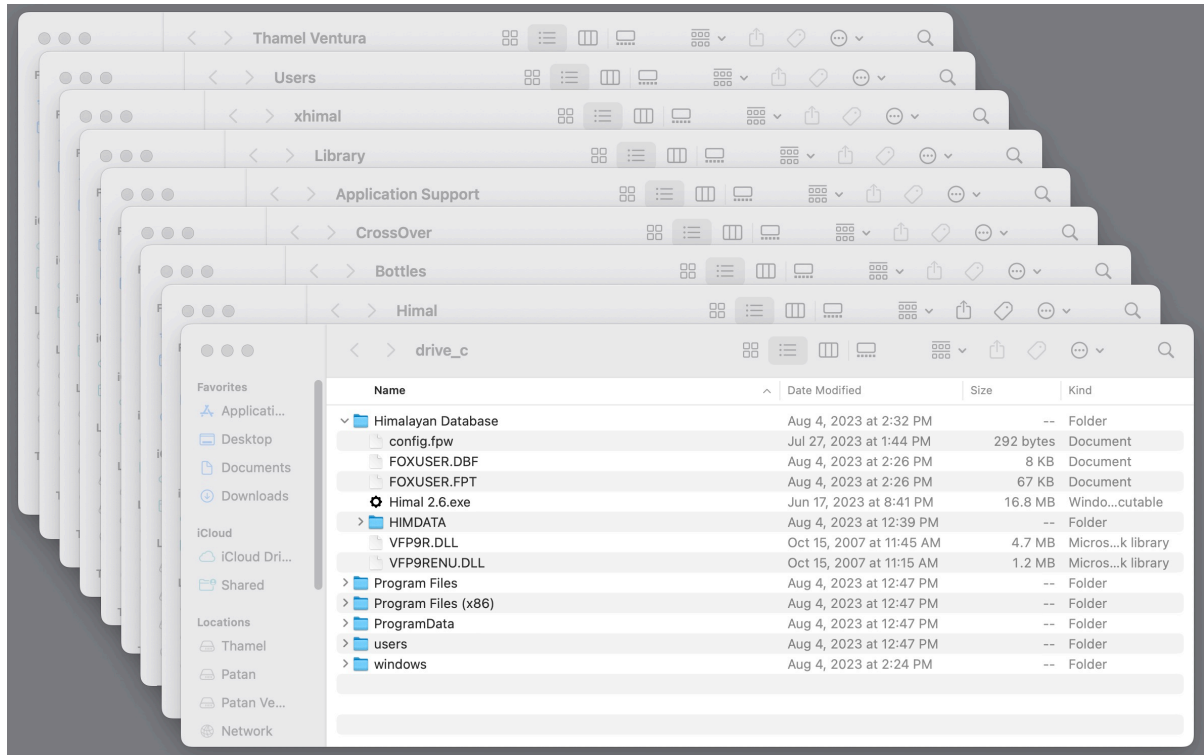
All remaining update files are loaded automatically during the update process.

Confirmation messages are given that each of the four tables (expeditions, members, literature references, and peaks) has been updated.

## Replacing Components of the Database

The entire Himalayan Database folder that is nestled inside of the CrossOver application in the Application Support folder may be replaced at the drive\_c level if both the Himal program and the HIMDATA folder need to be updated. The Himalayan Database folder is located by following the path:

*your-hard-drive-name->Users->your-username->Library->Application Support->Crossover->Bottles->Himal>drive\_c>Himalayan Database*



A replacement Himalayan Database folder for CrossOver is contained in HimalXOvr.zip and may be downloaded from the Himalayan Database web site at:

[www.himalayandatabase.com/updates-xovr.html](http://www.himalayandatabase.com/updates-xovr.html)

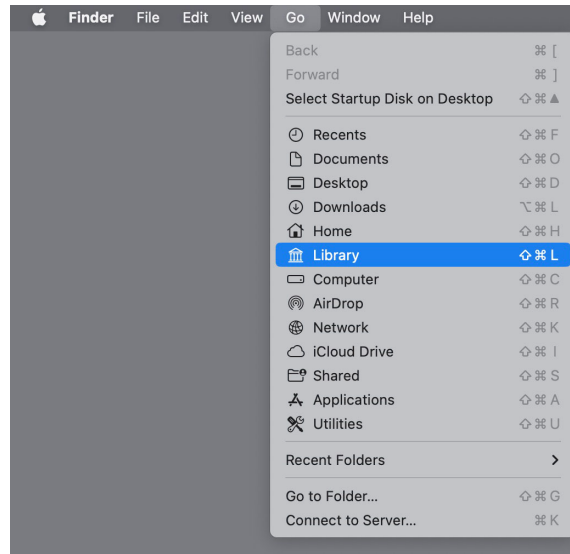
Individual components of the Himalayan Database such as the Himal program or the HIMDATA folder may be replaced by copying their newer versions into the Himalayan Database folder at the drive\_c level.

If you replace the Himal program, you will need to re-activate it by selecting the Run command from the CrossOver main window (as described above).

## Showing the User Library Directory Permanently

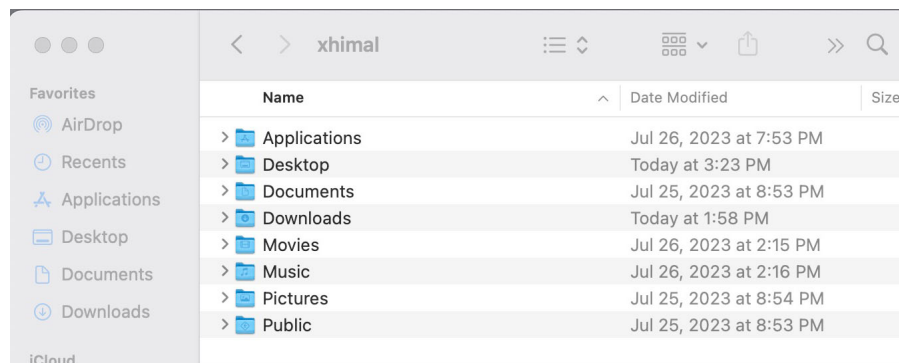
The User Library directory is hidden by default since most users never need to access it.

For temporary access to the Library directory, hold down the Option key when clicking on the Go menu in the Apple Finder and then select Library.

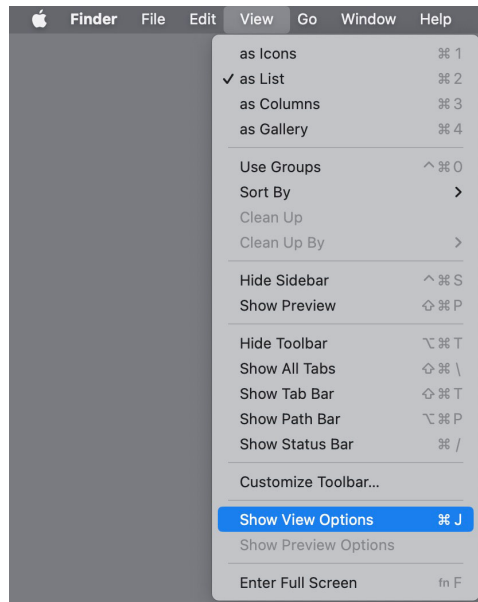


For permanent access to the Library directory, you can do the following:

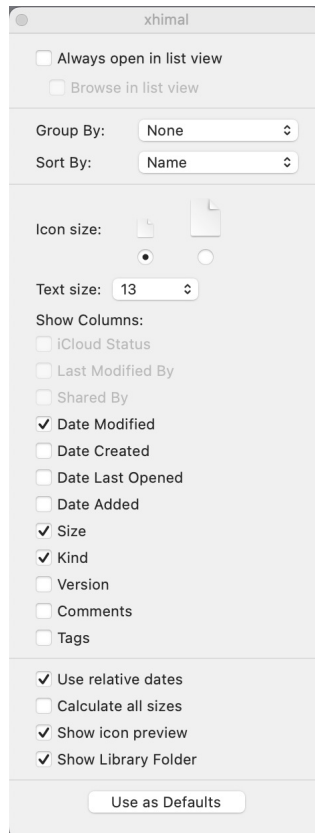
Open your user directory in the User folder (in this case the user name is xHimal):



Select Show View Options from the View menu in the Finder:



Select Show Library Folder at the bottom on View Options menu:



The Library folder will now be permanently displayed in the user directory:

xhimal		
Name	Date Modified	Size
> Applications	Jul 26, 2023 at 7:53 PM	
> Desktop	Today at 3:36 PM	
> Documents	Jul 25, 2023 at 8:53 PM	
> Downloads	Today at 1:58 PM	
> Library	Jul 26, 2023 at 8:01 PM	
> Movies	Jul 26, 2023 at 2:15 PM	
> Music	Jul 26, 2023 at 2:16 PM	
> Pictures	Jul 25, 2023 at 8:54 PM	
> Public	Jul 25, 2023 at 8:53 PM	